

WBS NO: 2025CPT.01.18.10082

CONTRACT: DA00640

STATE OF NORTH CAROLINA

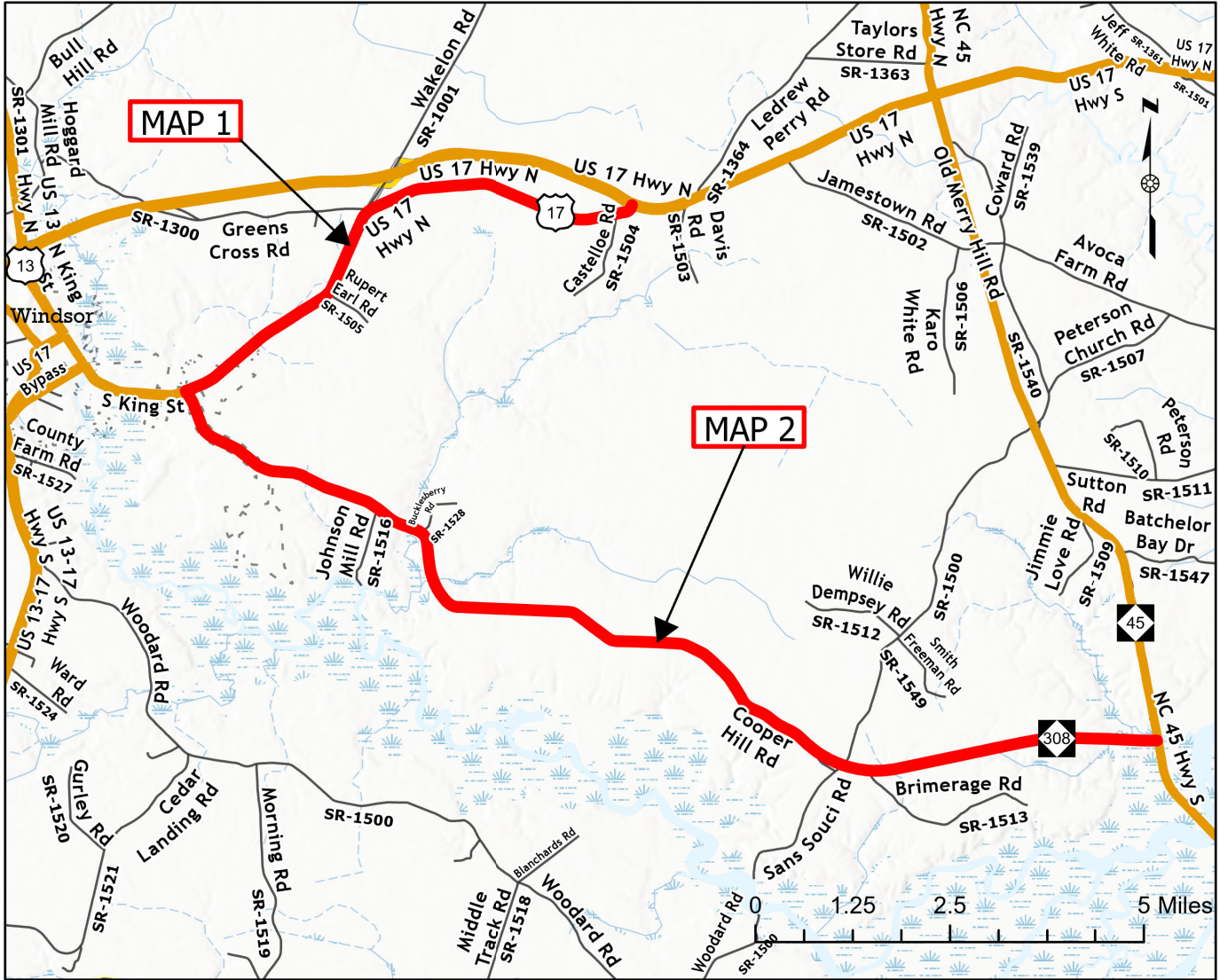
DIVISION OF HIGHWAYS

BERTIE

STATE	STATE PROJECT REFERENCE NUMBER	SHEET NO.
NC	2025CPT.01.18.10082	1
STATE PROJECT NUMBER		DESCRIPTION
2025CPT.01.18.10082		P.E., CONST.

TYPE OF WORK: MICRO-SURFACING & LONG LIFE PAVEMENT MARKINGS

MAP	ROUTE	FROM	TO
01	Old US 17	NC 308 (Cooper Hill Rd.)	US 17
02	NC 308 (Cooper Hill Rd.)	NC 45	Old US 17



PROJECT LENGTH

MAP	MILES
01	5.68
02	11.799

Prepared in the Office of:
DIVISION OF HIGHWAYS
113 AIRPORT DR., EDENTON, NC 27932

B. N. BRASWELL, PE
DIV. PROJ. DEVELOPMENT ENGINEER

M. S. WINSLOW
DIVISION CONTRACT ENGINEER

J. S. ABEL, JR.
DIVISION PROJECT TEAM LEAD

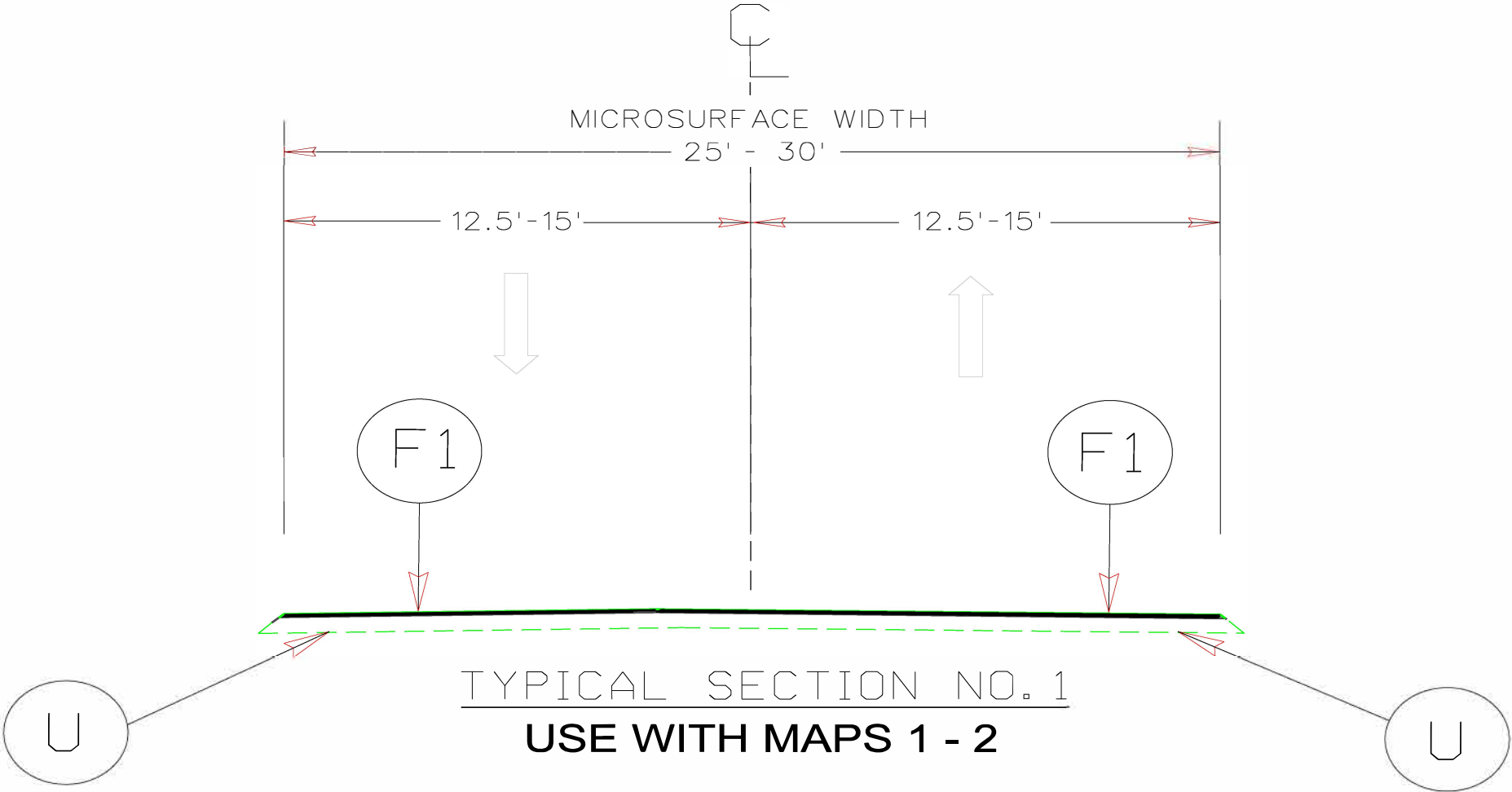
D. H. STALLINGS
DIVISION DESIGN ENGINEER



PAVEMENT SCHEDULE	
F1	PROP. LATEX MODIFIED MICROSURFACING, TYPE III AT AN AVERAGE RATE OF 22-26 LBS. PER SQ. YD.
U	EXISTING PAVEMENT

PROJECT REFERENCE NO.	SHEET NO.
2025CPT.01.18.10082	2

- NOTES:
- * ALL INTERSECTING ROADS ARE TO BE RESURFACED TO THE ENDS OF THEIR RADII, THE MAIN LINE RIGHT OF WAY OR AS DIRECTED BY THE ENGINEER. THIS SHALL INCLUDE ANY TAPERS AND TURN LANES LOCATED BOTH ON THE MAIN LINE OR INTERSECTING PAVED ROADWAY.
 - * EDGES, PAVEMENT WIDENING, INTERSECTIONS AND BRIDGE FLARES ARE INCLUDED IN THE SUMMARY OF QUANTITIES.
 - * 0.375" OF SINGLE COURSE MICROSURFACING IS TO BE APPLIED THE FULL WIDTH OF THE ROADWAY
 - * BURLAP FINISH IS NOT PERMITTED ON ANY SECTION OF MAT.



PROJECT NO.	SHEET NO.	TOTAL NO.
2025CPT.01.18.10082	3	

SUMMARY OF QUANTITIES

												0000100000-N	1891000000-E	2830000000-N	2845000000-N
PROJECT NO	COUNTY	MAP NO	ROUTE	DESCRIPTION	TYP NO	LANES	LANE TYPE	LENGTH	WIDTH	BEGIN MP	END MP	MOBILIZATION	GENERIC PAVING ITEM LATEX MODIFIED MICROSURFACING TYPE III	ADJUSTMENT OF MANHOLES	ADJUSTMENT OF METER OR VALVE BOXES
								MI	FT						
2025CPT.01.18.10082	Bertie	1	US-17 N / US 17 HWY N/S KING ST	FROM NC 308 (COOPER HILL RD.) TO US 17		2	2WU	5.68	30	13.12	18.8	1	103,892.00	1	1
2025CPT.01.18.10082	Bertie	2	NC-308 E / COOPER HILL RD	FROM NC 45 TO OLD US 17		2	2WU	11.799	25	2.051	13.85	*	179,719.00	1	
TOTAL FOR PROJ NO. 2025CPT.01.18.10082								17.479				*	283,611.00	2	1
GRAND TOTAL								17.479				1	283,611.00	2	1

PROJECT NO.	SHEET NO.	TOTAL NO.
2025CPT.01.18.10082	4	

THERMOPLASTIC AND PAINT QUANTITIES

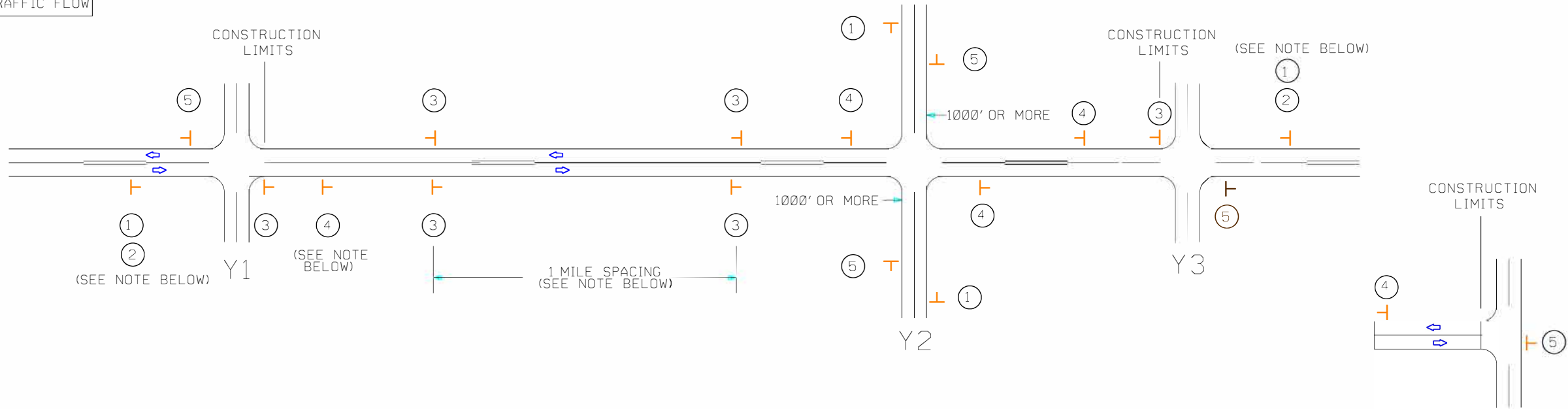
PROJECT NO	COUNTY	MAP NO	ROUTE	DESCRIPTION	TYP NO	LANES	LANE TYPE	LENGTH		WIDTH	BEGIN MI	END MP	4413000000-E	4457000000-N	4688000000-E		4709000000-E	4725000000-E	4810000000-E		4835000000-E	4845000000-N	4855000000-E	4870000000-E	4875000000-N
								MI	FT				WORK ZONE ADVANCE / GENERAL WARNING SIGNING	TEMPORARY TRAFFIC CONTROL (SP)	THERMOPLASTIC PAVEMENT MARKING LINES (6", 90 MILS) WHITE	THERMOPLASTIC PAVEMENT MARKING LINES (6", 90 MILS) YELLOW	THERMO PAVEMENT MARKING LINES (24" 90 MILS) (SP)	THERMOPLASTIC PAVEMENT MARKING SYMBOL (90 MILS), LT ARROW	PAINT PAVEMENT MARKING LINES (4") WHITE	PAINT PAVEMENT MARKING LINES (4") YELLOW	PAINT PAVEMENT MARKING LINES (24")	PAINT PAVEMENT MARKING SYMBOL (LT ARROW)	REMOVAL OF PAVEMENT MARKING LINES (6")	REMOVAL OF PAVEMENT MARKING LINES (24")	REMOVAL OF PAVEMENT MARKING SYMBOLS & CHARACTERS
2025CPT.01.18.10082	Bertie	1	US-17 N / US 17 HWY N/S KING ST	FROM NC 308 (COOPER HILL RD.) TO US 17	1	2	2WU	5.68	30	13.12	18.8		236	1	59,981	34,253	43	5	59,981	34,253	43	5	94,234	43	5
2025CPT.01.18.10082	Bertie	2	NC-308 E / COOPER HILL RD	FROM NC 45 TO OLD US 17	1	2	2WU	11.8	25	2.051	13.85		413	*	124,598	89,926		4	124,598	89,926		4	214,524		4
TOTAL FOR PROJ NO. 2025CPT.01.18.10082								17.48					649	*	184,579	124,179	43	9	184,579	124,179	43	9	308,758	43	9
															308,758				308,758						
GRAND TOTAL								17.48					649	1	184,579	124,179	43	9	184,579	124,179	43	9	308,758	43	9
															308,758				308,758						

SIGNING FOR RESURFACING PROJECTS

LEGEND

STATIONARY SIGN

DIRECTION OF TRAFFIC FLOW



TEE INTERSECTION

MAINLINE (-L-) SIGNING

-Y- LINE SIGNING

SIGNING NOTES AND PLACEMENT PER DIRECTION	<div>1</div> <div><div>ROAD WORK AHEAD</div><div>W20-1 48" X 48"</div></div> <div>2</div> <div><div>NEXT XX MILES</div><div>W7-3aP 24" X 18"</div></div> <div>PLACE 1000' PRIOR TO BEGINNING OF CONSTRUCTION LIMITS. ONLY USED ON -Y- LINES IF RESURFACING LIMITS EXTEND 1000' ALONG -Y- LINE. #2 SIGN ONLY USED WHEN CONSTRUCTION LIMITS ARE 2 OR MORE MILES IN LENGTH. (NO FRACTIONAL OR DECIMAL NUMBERS)</div>	NO REQUIRED STATIONARY SIGNING FOR THE FOLLOWING -Y- LINE CONDITIONS: 1) LESS THAN 1000' OF RESURFACING ALONG -Y- LINE 2) SUBDIVISION ROADS 3) DEAD END ROADS
	<div>3</div> <div><div>LOW/SOFT SHOULDER</div><div>SP 13107 48" X 48"</div></div> <div><div>UNMARKED PAVEMENT</div><div>SP 48" X 48"</div></div> <div>- ALTERNATE THE FOLLOWING TWO SIGNS: - PLACE INITIALLY AT THE CONSTRUCTION LIMITS AND SPACE 1 MILE APART THEREAFTER. - AT TEE INTERSECTIONS INSTALL INITIALLY 59/64 MILE FROM INTERSECTION AND SPACE 1 MILE APART THEREAFTER.</div>	WHEN PAVING/CONSTRUCTION ACTIVITIES PROCEED ACROSS AN UNSIGNED -Y- LINE, PORTABLE ADVANCE WARNING SIGNS SHALL BE USED ALONG THE -Y- LINE AS SHOWN BELOW. REMOVE UPON COMPLETION OF WORK.
	<div>4</div> <div><div>ROAD UNDER CONST</div><div>SP 13106 48" X 48"</div></div> <div>- THESE ARE FOR -Y- LINES THAT ARE "THROUGH" ROADWAYS. - DEAD END AND SUBDIVISION ROADS ARE NOT "THROUGH" ROADWAYS. - INSTALL 500' +/- FROM EACH -Y- LINE APPROACH AS SHOWN ABOVE. - FOR MULTIPLE -Y- LINES THAT ARE SEPARATED BY 0.25 MILES OR LESS, TREAT AS A SINGLE UNIT AND INSTALL WITHIN 500' OF EACH APPROACH. - A MAXIMUM OF 2 SIGN SETS PER MILE. DO NOT INSTALL WHEN -Y- LINES ARE WITHIN 0.5 MILES FROM "END ROAD WORK" SIGN. - FOR TEE INTERSECTIONS, INSTALL WITHIN 500' +/- OF THE INTERSECTION ALONG -L- LINE.</div>	<div><div>ROAD WORK AHEAD</div><div>W20-1 48" X 48"</div></div> <div><div>ROAD WORK AHEAD</div><div>W20-7 A 48" X 48"</div></div> <div>PLACED 500' IN ADVANCE OF FLAGGER.</div>
	<div>5</div> <div><div>END ROAD WORK</div><div>G20-2 A 48" X 24"</div></div> <div>PLACE 500' FOLLOWING THE END OF CONSTRUCTION LIMITS OR AS SHOWN WHEN WORK ENDS AT A 3-WAY TEE INTERSECTION.</div>	
	THE ABOVE SIGNS ARE ALL THAT ARE REQUIRED FOR A CONTRACTOR TO BEGIN A RESURFACING CONTRACT. ANY ADDITIONAL SIGNS REQUESTED BY NCDOT DIVISIONS SHALL BE INSTALLED WITHIN 7 BUSINESS DAYS OF THE START OF CONTRACT WORK.	
LESS 2 MILES	FOR RESURFACING MAPS WITH CONSTRUCTION LIMITS LESS THAN 2 MILES IN LENGTH, NO STATIONARY SIGNS ARE REQUIRED. USE PORTABLE "ROAD UNDER CONSTRUCTION" OR "ROAD WORK AHEAD" SIGNS IN LIEU OF STATIONARY ADVANCE WARNINGS SIGNS.	

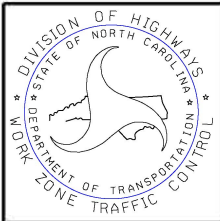
DIVISION OF HIGHWAYS

STATE OF NORTH CAROLINA

DEPARTMENT OF TRANSPORTATION

WORK ZONE TRAFFIC CONTROL

AD



ADVANCE WARNING SIGNS
FOR
RURAL AND SUBURBAN
2-LANE ROADWAY
RESURFACING